



MODEL YEAR **2019**

**OWNER'S / OPERATOR'S MANUAL**



**GOLF CAR**

**⚠ Read this manual carefully before operating this vehicle.**

**DRIVE<sup>2</sup>** **EFI**  
QUIETECH

**DR2A EFI**



**WARNING:** Operating, servicing and maintaining a passenger vehicle or off-road vehicle can expose you to chemicals including engine exhaust, carbon monoxide, phthalates, and lead, which are known to the State of California to cause cancer and birth defects or other reproductive harm. To minimize exposure, avoid breathing exhaust, do not idle the engine except as necessary, service your vehicle in a well-ventilated area and wear gloves or wash your hands frequently when servicing your vehicle. For more information go to [www.P65Warnings.ca.gov/passenger-vehicle](http://www.P65Warnings.ca.gov/passenger-vehicle)

## INTRODUCTION

Congratulations on your purchase of a Yamaha Electronic Fuel Injection (EFI) Golf Car. This manual contains information you will need for proper operation, maintenance, and care of your EFI Golf Car. A thorough understanding of these simple instructions will help you to obtain maximum enjoyment from your new Yamaha.

If you have any questions about the operation or maintenance of your EFI Golf Car, please consult a Yamaha dealer.

**Yamaha Golf-Car Company**

**DR2A EFI Golf Car  
Owner's/Operator's Manual  
© 2019 by Yamaha Golf-Car Company  
1st edition**

**All rights reserved. Any reprinting  
or unauthorized use without the  
written permission of  
Yamaha Golf-Car Company  
is expressly prohibited.**

**Printed in U.S.A.  
P/N LIT-19626-A0-05**

# IMPORTANT MANUAL INFORMATION

Particularly important information is distinguished in this manual by the following notations:



This is the safety alert symbol. It is used to alert you to potential personal injury hazards. Obey all safety messages that follow this symbol to avoid possible injury or death.

## **! WARNING**

A **WARNING** indicates a potentially hazardous situation which, if not avoided, could result in death or serious injury.

## **NOTICE**

A **NOTICE** indicates special precautions that must be taken to avoid damage to the golf car or other property.

## **TIP**

A **TIP** provides key information to make procedures easier or clearer.

## **TIP**

Yamaha continually seeks advancements in product design and quality; therefore, while this manual contains the most current product information available at the time of printing, there may be minor discrepancies between your golf car and this manual. If you have any questions concerning this manual, please consult your Yamaha dealer.

## **! WARNING**

Read and understand this manual completely before operating your golf car. This manual should be considered a permanent part of your golf car and should remain with the golf car when resold.

# CONTENTS

**WARRANTY**

**1**

**IMPORTANT LABELS**

**2**

**OPERATOR SAFETY**

**3**

**SAFETY CONSIDERATIONS**

**4**

**CONTROLS**

**5**

**PRE-OPERATION CHECKS**

**6**

**OPERATION**

**7**

**MAINTENANCE**

**8**

**STORAGE**

**9**

**SPECIFICATIONS**

**10**

**WIRING**

**11**

# WARRANTY

## LIMITED 4-YEAR WARRANTY FOR DRIVE<sup>2</sup> GOLF CAR

1

Yamaha Golf-Car Company hereby warrants that any new Yamaha DRIVE<sup>2</sup> Gas or DRIVE<sup>2</sup> Electric golf car purchased from Yamaha, or an Authorized Dealer or Distributor in the United States will be free from defects in material and workmanship for FOUR years from date of purchase, subject to the stated limitations. DURING THE PERIOD OF WARRANTY, any authorized Yamaha golf car service technician, dealer, or distributor will, free of charge, repair or replace, at Yamaha's option, any part adjudged defective by Yamaha due to faulty workmanship or material from the factory. Parts used in warranty repairs will be warranted for the balance of the vehicle's warranty period. All parts replaced under warranty become property of Yamaha Golf-Car Company.

Common Parts		Electric Car (DC or AC motor) Specific	
Frame	Limited Lifetime to Original Owner	Battery - Trojan ' T875 ' with HydroLink Watering System	4 Years or 25,000 amp-hours whichever comes first <small>*Detailed condition on the next page</small>
Transaxle	4 Years	Electric Motor	4 Years
Pedals	3 Years	Motor Controller	4 Years
Brakes (excluding shoes / pads)	4 Years	Charger	4 Years
Electrical wires, switches, and relays	3 Years	Charger Cord	4 Years
Suspension / Steering components	4 Years	Charger Receptacle	4 Years
Seats	2 Years	Throttle Position Sensor	2 Years
Sun Top	4 Years	<b>GAS Car (Quietech and Carb) specific</b>	
Bumpers / Body Parts	3 Years	Exhaust / Intake / Generator	4 Years
Floor Mats	2 Years	Gas Engine	4 Years
Scorecard Holders	2 Years	Throttle Cables / Controls	3 Years
Bag Carrier	3 Years	Battery	1 Year
<b>Common Accessories</b>		Clutch (excluding drive belt)	4 Years
Windshield	3 Years	All Remaining Parts	1 Year
Sand Bottle / Cooler	3 Years		
Information Holder / Bag Cover	3 Years		

**EXCLUSIONS** from this Warranty shall include any failures caused by:

- Abnormal strain, neglect, or abuse, including lack of proper maintenance, and use contrary to the Owner's/Operator's Manual instructions.
- Accident or collision damage.
- Installation of parts or accessories that are not original equipment.
- Fading, rust, or deterioration due to exposure or ordinary wear and tear.
- Modifications or alterations that affect the car's condition, operation, performance, or durability.
- Damage due to improper transportation.
- Acts of God, e.g. lightning, hail damage, flooding, fire, etc.

This Limited Warranty does not cover any parts replaced due to normal wear or routine maintenance, including oil and air filter elements, brake shoes, tire wear, spark plugs, starter and clutch drive belts. Any charges incurred in transporting a golf car or charger to and from an authorized Yamaha golf car dealer for service or in performing field service are also excluded from this warranty. Gasoline-powered golf car starting batteries on vehicles equipped with a golf course GPS device, or any other device with a parasitic current draw, unless the vehicle is equipped from the factory with an optional deep cycle starting battery, are also excluded from this warranty.

**THE CUSTOMER'S RESPONSIBILITY** under this warranty shall be to operate and maintain the golf car and charger as specified in the appropriate Owner's/Operator's Manual, and give notice to an authorized Yamaha golf car dealer of any and all apparent defects within ten (10) days after discovery, and make the vehicle or charger available at that time for inspection and repairs by the dealer's authorized representative.

**WARRANTY TRANSFER:** Any transfer of warranty must take place within the first three years of the original in-service date of the vehicle. The vehicle must be re-registered by an authorized Yamaha Golf-Car Dealer within 30 days of transfer. A fee may be charged for the transfer of the warranty.

### EMISSION CONTROL SYSTEM WARRANTY

Yamaha Motor Corporation, U.S.A. also warrants to the ultimate purchaser of each gas-powered golf car covered by this warranty that the product is designed, built, and equipped so as to conform at the time of sale with all U.S. emission standards applicable at the time of manufacture and that it is free from defects in materials and workmanship which would cause it not to meet these standards within the same time period described in THE PERIOD OF WARRANTY above, or a minimum of two years, whichever is longer. Failures other than those resulting from defects in material or workmanship which arise solely as a result of owner abuse and/or lack of proper maintenance are not covered by this warranty.

Questions concerning this warranty contact Yamaha at:  
1270 Chastain Road  
Kennesaw, Georgia 30144  
1-866-747-4027  
powerproductsemissionwarranty@yamaha-motor.com

# WARRANTY

1

*Yamaha Golf-Car Company makes no other warranty of any kind, expressed or implied. All implied warranties of merchantability and fitness of merchantability and fitness for a particular purpose which exceed the obligations and time limits stated in this warranty are hereby disclaimed by Yamaha Golf-Car Company and excluded from this Warranty.*

*Some states do not allow limitations on how long implied warranty lasts, so the above limitation may not apply to you. Also excluded from this Warranty is any incidental or consequential damages including loss of use. Some states do not allow the exclusion or limitation of incidental or consequential damages, so the above exclusion may not apply to you. This Warranty give you specific legal rights, and you may also have other rights, which vary from state to state.*

YAMAHA GOLF-CAR COMPANY, KENNESAW, GEORGIA 30144

EFFECTIVE DATE: 7/1/16

©2019 Yamaha Golf-Car Company

# WARRANTY

1

©2019 Yamaha Golf-Car Company



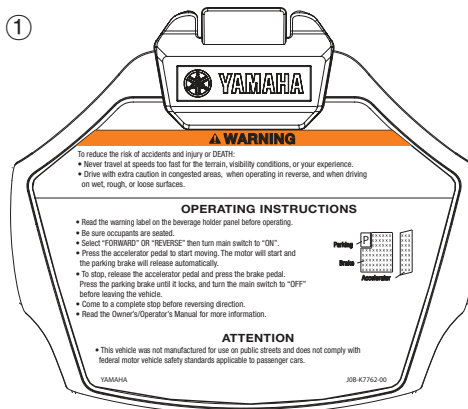
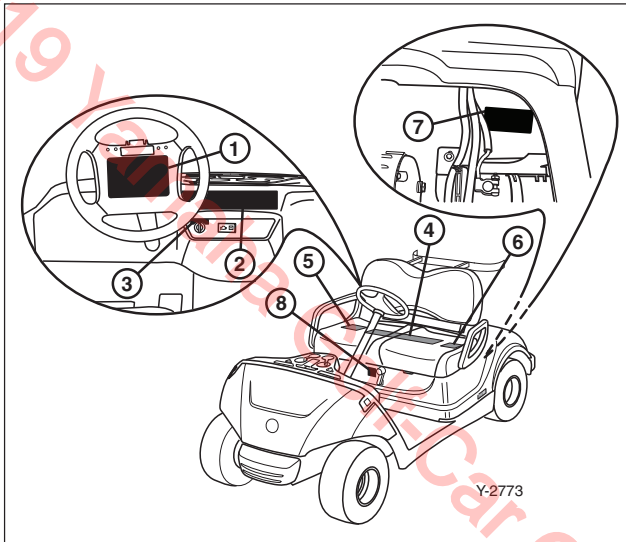
# IMPORTANT LABELS

## ! SAFETY AND INSTRUCTION LABELS

### ! WARNING

Please read the following labels carefully before operating your golf car, and promptly replace any labels which become damaged or removed. Death or serious personal injury can result from failing to read and comply with the safety instruction labels.

2



# IMPORTANT LABELS

2



②

## ⚠ WARNING

- To reduce the risk of accidents and injury or DEATH:
- Read the label located on the steering wheel before operation.
- Operate only when authorized and only in designated areas.
- Operate from driver's seat only.
- This vehicle is restricted to 2 occupants per bench seat.
- Do not start vehicle until all occupants are seated.
- Remain fully seated and hold on when in motion.
- Keep entire body inside vehicle.
- Drive slowly in turns.

YAMAHA

JOB-K7768-00

③



④

**This spark ignition system meets all requirements of the Canadian Interference Causing Equipment Regulations.**  
**Ce système d'allumage par étincelle de véhicule respecte toutes les exigences du Règlement sur le matériel brouilleur du Canada.**

YAMAHA

JMS-H2277-00

Y-1806

⑤



## ⚠ WARNING

- GASOLINE IS HIGHLY FLAMMABLE AND EXPLOSIVE. A fire or explosion could cause SEVERE INJURY or DEATH.**
- Keep heat, sparks, and open flame away from fuel tank and fuel lines.
  - Do not start while engine is running or hot.
  - Do not modify fuel system.
  - Services should be performed by dealer or qualified personnel.

YAMAHA

## ⚠ AVERTISSEMENT


- L'ESSENCE EST HAUTEMENT FLAMMABLE ET EXPLOSIF. Un feu ou une explosion pourraient provoquer LA BLESSURE SEVERE ou LA MORT.**
- Garder étincelles, flammes et chaleur loin de réservoir à essence et des tuyaux carburant.
  - Ne pas commencer à démarrer le moteur est chaud.
  - Ne pas modifier le système d'alimentation.
  - Toute révision doit être faite chez le fournisseur ou par du personnel qualifié.



JWI-H6297-02

# IMPORTANT LABELS

⑥

DATE OF CONSTRUCTION: \*\*\* \*\*\*\* MY\*\*\*\*  
 YAMAHA MOTOR POWERED PRODUCTS CO., LTD   
 200-1 SAKAGAWA, KAKEGAWA, JAPAN  
 MAX. BATTERY WEIGHT: \*\* kg MODEL: \*\*\*\*\*  
 NOMINAL SYSTEM VOLTAGE: \*\*V MAX. POWER: \*\*\* hp (\*\* kW)  
 FUEL TYPE: UNLEADED GASOLINE DRY WEIGHT: \*\*\* kg  
 VEHICLE LOAD CAPACITY: \*\*\* kg PER SEAT, \*\* kg BAGWELL  
 \*\*\*-F4236-\*\*

2

⑦

**EMISSION CONTROL INFORMATION**  
**YAMAHA MOTOR CO., LTD.**  
 THIS EQUIPMENT CONFORMS TO \*\*\*\* CALIFORNIA EVI/EPA EMISSION REGULATIONS AND THIS ENGINE MEETS U.S. EPA EXH/EVAP REGS FOR \*\*\*\*.


EF:\*\*\*\*\* DISPLACEMENT: \*\*\* cc. EMISSION CONTROL SYSTEM: \*\*\*  
 EVAPORATIVE CODE CARB:\*\*\*\*\* EVAPORATIVE CODE EPA:\*\*\*\*\*

THIS ENGINE IS CERTIFIED TO OPERATE ON UNLEADED GASOLINE

MAINTENANCE SPECIFICATIONS	ENGINE OIL: SAE 10W-30
IGNITION TIMING: 27 BTDC	SPARK PLUG GAP: .028-.031

NO OTHER ADJUSTMENTS NEEDED

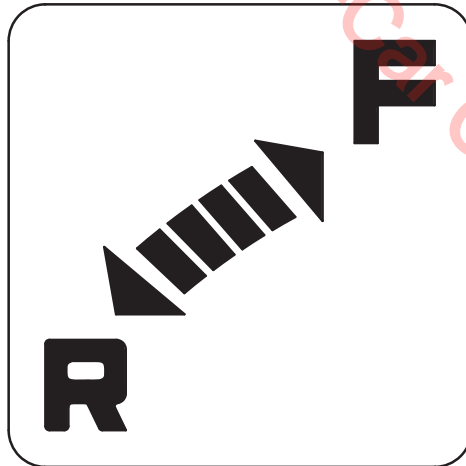
The air index of this engine is 3



**Most Clean** 0 2 4 6 8 10 **Least Clean**

Note: The lower the Air Index, the less Pollution  
 This engine is certified to be emissions compliant for the following use:  
 Moderate (250 hours)  Intermediate (500 hours)  Extended (1000 hours)  
 Check owner's manual for further details. \*\*\*-F179T-\*\*

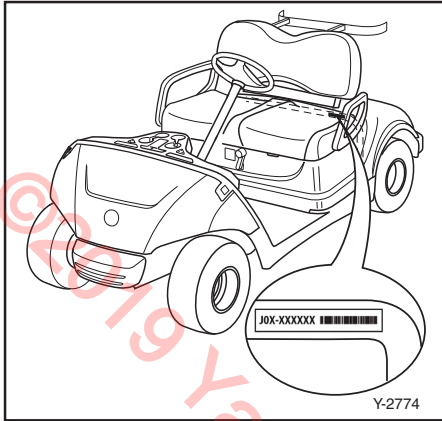
⑧



Y-1610

# IMPORTANT LABELS

2



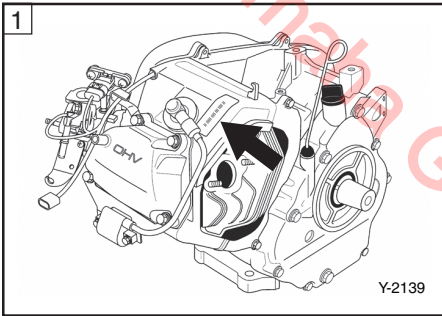
## SERIAL NUMBER

The serial number is identified in the location shown.

## TIP

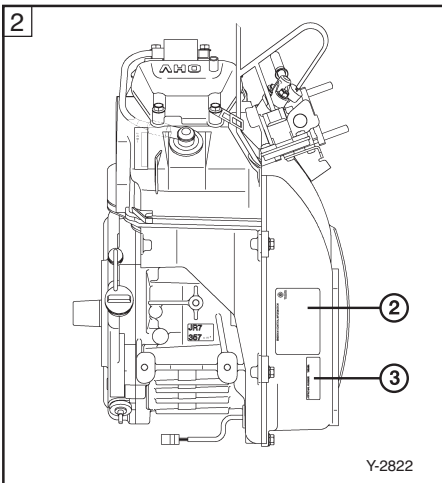
The first three digits of the serial number are for model identification; the remaining digits are the unit production number. Keep a record of these numbers for reference when ordering parts from a Yamaha Golf-Car Company dealer.

1



The engine serial number ① is affixed in the location shown.

2



## ② Engine Information

**EMISSION CONTROL INFORMATION**  
**YAMAHA MOTOR CO.,LTD.**

This engine meets \*\*\*\* California exhaust emission regulations for small off-road engines.  
THIS ENGINE MEETS U.S.EPA EXH REGS FOR \*\*\*\*  
EMISSION COMPLIANCE PERIOD : 1000HOURS  
EP : \*\*\*\*\* DISPLACEMENT : \*\*\* cc  
EMISSION CONTROL SYSTEM : \*\*\*  
This engine is certified to operate on unleaded gasoline.  
ENGINE OIL : SAE 10W-30 TYPE : SE No other adjustments needed.  
The air index of this engine is 3 (California only)

0 2 4 6 8 10  
MOST CLEAN LEAST CLEAN

Note : The lower the air index, the less the pollution.  
This engine is certified to be emissions compliant for the following use :  
 MODERATE (250 HOURS)  INTERMEDIATE (500 HOURS)  EXTENDED (1000 HOURS)  
Check owner's manual for further details.

## ③ APPROVAL NUMBER

**APPROVAL NUMBER YAMAHA**  
\*\*\*\*\*  
Production date : See stamp on Crankcase.  
Serial:See Label on Air shroud.  
Model:\*\*\* \*\* \*-21186-\*

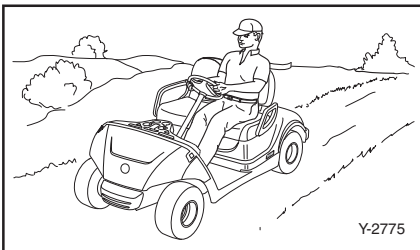


## OPERATOR SAFETY

Yamaha golf cars are designed to be simple to operate. However, be sure to observe the following to reduce the risk of serious injury or death due to loss of control and other hazards:

### BEFORE OPERATING THE GOLF CAR

- Read this Owner's/Operator's manual and all safety and instruction labels on the golf car before operating.
- Perform the pre-operation checks found in Section 6 of this manual.
- Only authorized people should drive the golf car, from the driver's side only, and only in designated areas.
- Do not allow more than two occupants per seat. This golf car is restricted to two occupants, unless equipped with a rear seat.
- Do not operate the golf car while under the influence of alcohol or drugs; their effect on vision and judgment make operating a golf car dangerous.
- Do not operate the golf car on public streets, roads or highways; unless allowed by law or the local regulating authority.



### WHILE OPERATING THE GOLF CAR

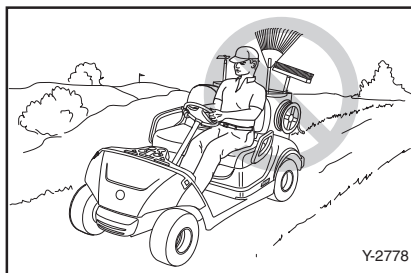
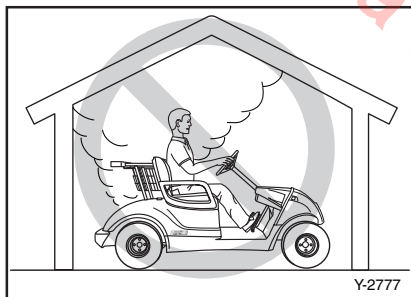
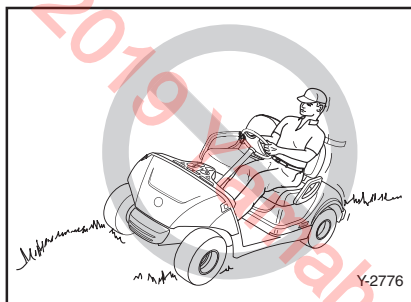
- Keep your entire body inside the golf car, remain seated, and hold on when the car is in motion.
- Do not start the golf car until all occupants are seated.
- Keep your hands on the steering wheel and your eyes on the path ahead.



## OPERATOR SAFETY

- Use extra care in congested areas or when backing up. Always back up slowly, and watch carefully.
- Avoid starting or stopping abruptly.
- Vary the speed of the golf car to match the terrain.
- Avoid turning the steering wheel too sharply at higher speeds to avoid tipping or rolling the vehicle.
- Always drive slowly straight up or straight down slopes – never at an angle to avoid tipping or rolling the vehicle.
- Do not run the engine indoors. Exhaust gas is poisonous and could result in carbon monoxide poisoning.
- Do not make any modification or addition which affects capacity or safe operation, or make any changes not in accordance with the owner's/operator's manual.

3





# SAFETY CONSIDERATIONS

Like all machines, golf cars can cause injury if improperly used or maintained.

Experience has shown that golf cars are safe when operated in accordance with the safety warnings affixed to every golf car.

## DRIVER QUALIFICATIONS

Allow only authorized people to operate golf car. It is recommended that only people who possess a valid motor vehicle driver's license be allowed to operate golf car.

### **⚠ WARNING**

**Do not operate golf cars when under the influence of alcohol or drugs. Death or serious personal injury can result from failing to comply with the safety and warning instructions affixed to the golf car.**

## HAZARD PREVENTION

Drivers should be mindful of road hazards, and avoid dangerous situations that may include the following:

**Steep Grades** – Where steep grades exist, restrict golf car to designated roadway or path, and descend slowly with foot on the brake.

### **⚠ WARNING**

**Descend steep grades slowly with foot on brake. Death or serious personal injury can result from failing to comply with the safety and warning instructions affixed to the golf car.**

**Sharp Turns, Blind Corners and Bridge Approaches** – Adhere to all warning signs and take proper precautions to avoid the hazard.

**Wet Areas** – Wet grass may cause a golf car to lose traction and may affect stability. Vehicle operators should reduce speed in wet areas or during periods of inclement weather.



## SAFETY CONSIDERATIONS

- **Loose Terrain** – Avoid areas of loose terrain which may cause a golf car to lose traction and affect stability. Take notice of conditions and reduce speed when driving on uneven or loose terrain.
- **Pedestrian Areas** – Avoid areas with pedestrian traffic or congested areas whenever possible to prevent accidents. If it is impractical to avoid these areas, always remember that pedestrians have the right of way. When approaching pedestrian or congested areas always reduce speed, drive slowly, use caution and watch for pedestrians.

## MAINTENANCE REQUIRED FOR GOLF CAR SAFETY

Practice the following to help ensure the safety of golf car occupants:

- **Preventative Maintenance.** Perform all scheduled maintenance in accordance with manufacturer's recommendations to provide a safe, properly operating golf car.
- **Personnel.** Allow only qualified, trained and authorized personnel to inspect, adjust and maintain golf cars.
- **Parts and Materials.** Use only replacement parts and materials recommended by the manufacturer.
- **Ventilation.** Properly ventilate all maintenance and storage areas in accordance with applicable fire codes and ordinances to avoid fire hazards. Ventilation is required to remove flammable vapors and fumes from gasoline powered golf car storage areas. Ventilation is also required to remove hydrogen gas from the golf car storage areas during the battery charging process.





# SAFETY CONSIDERATIONS

## SAFETY PRECAUTIONS DURING MAINTENANCE

When performing maintenance, follow all safety instructions contained in the manufacturer's operation and service manuals, as well as the following safety procedures:

- Properly immobilize golf car before beginning any maintenance to avoid any unexpected vehicle movement.
- Properly block chassis before working underneath golf car to avoid any unexpected vehicle movement.
- When working on the fuel system or the battery, do not smoke, or allow any sparks or open flames near the vehicle, to avoid any fires or explosions.
- Use only properly insulated tools when working around batteries to avoid electrical shock or damage to the electrical system.
- Maintain all safety devices including brakes, steering mechanisms, warning devices and governors, in a safe operating condition. Do not modify these safety devices as supplied by the manufacturer.
- After each maintenance or repair, the car must be driven by a qualified, trained and authorized person – in an area free of pedestrian traffic – to ensure proper operation and adjustment.

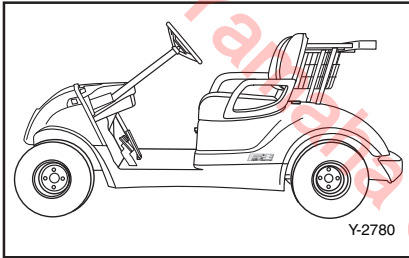
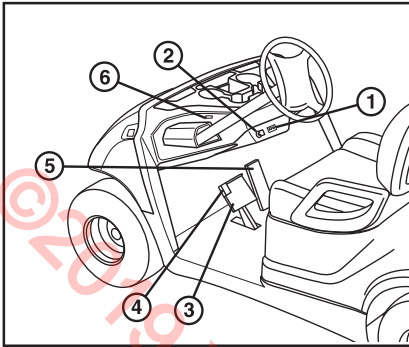
- Record all maintenance performed in a maintenance record log by date, name of person performing maintenance and type of maintenance. Periodically inspect maintenance log to ensure accurate and complete entries.
- Provide operator comment cards to assist in identifying non-periodic maintenance needs for specific golf cars.
- Maintain, in a legible condition, all nameplates, warnings and instructions provided by the manufacturer.
- If new nameplates, warnings or instructions are needed, contact your Yamaha dealer.

## FUEL HANDLING/STORAGE

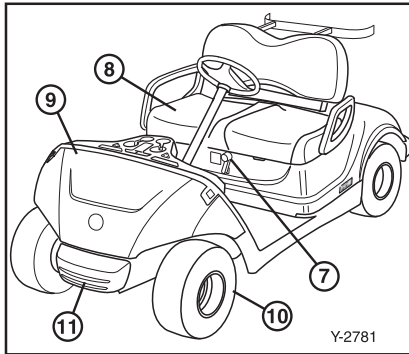
Take the following precautions to ensure maintenance worker safety:

- Supervise the storage and handling of liquid fuels in accordance with applicable fire and safety requirements to avoid any fires or explosions.

# CONTROLS



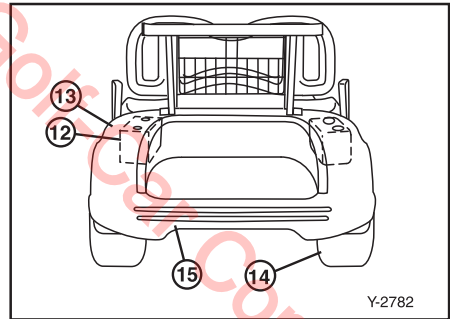
Y-2780



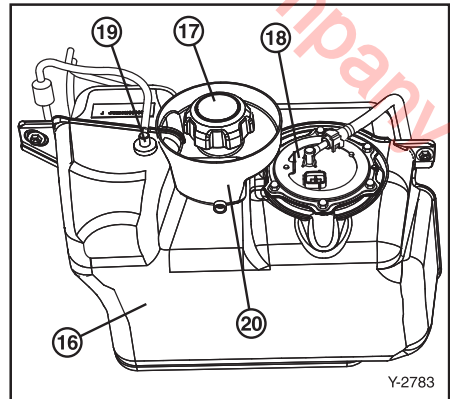
Y-2781

## FEATURES

- ① Engine/oil warning light
- ② Main switch
- ③ Brake pedal
- ④ Parking brake pedal
- ⑤ Accelerator pedal
- ⑥ USB ports
- ⑦ Drive select lever
- ⑧ Seat
- ⑨ Front body
- ⑩ Front tire
- ⑪ Front bumper
- ⑫ Battery
- ⑬ Rear body
- ⑭ Rear tire
- ⑮ Rear bumper
- ⑯ Fuel tank
- ⑰ Fuel cap
- ⑱ E.F.I. fuel pump
- ⑲ Fuel tank vent
- ⑳ Cover filler funnel

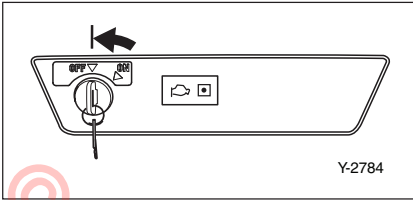


Y-2782



Y-2783

# CONTROLS



## MAIN SWITCH

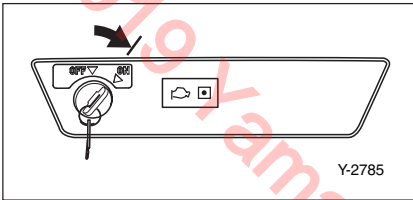
The main switch controls the following items:

### “OFF”

The electrical power circuit is switched off. The key can be removed only in this position.

### “ON”

The electrical power circuit is switched on. The golf car can be driven.



## ENGINE/OIL WARNING LIGHT

When the engine oil level falls below an acceptable level, this light comes on.

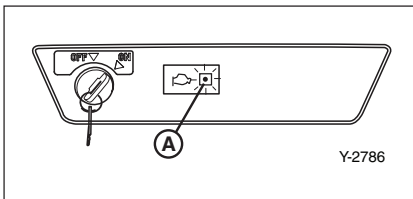
### NOTICE

**If the light comes on, stop the engine, check the engine oil level and add oil as necessary. (See page 6-3.)**

When the engine/oil warning light is flashing while the key is on, there may be a problem with the fuel injection system, which may affect performance, emissions and fuel economy or cause damage to the fuel injection system or engine.

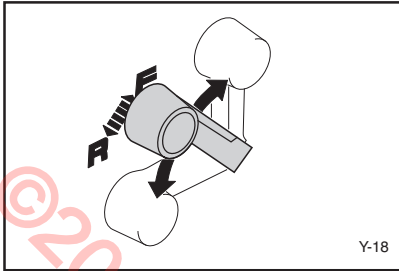
### NOTICE

**If the light is flashing, do not operate the vehicle. Contact your Yamaha Service representative to have the vehicle serviced.**



Ⓐ Engine/oil warning light

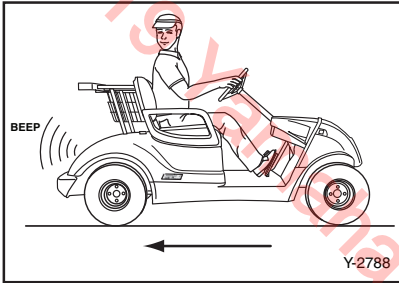
# CONTROLS



## DRIVE SELECT LEVER

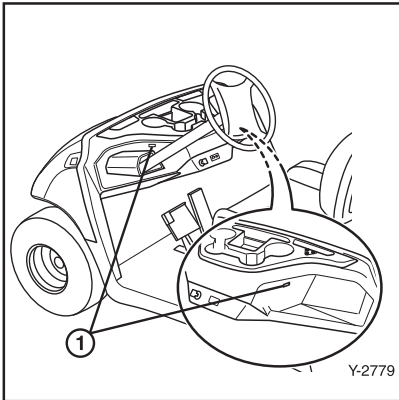
The drive select lever is used to shift the golf car into forward or reverse. After coming to a complete stop, move the lever to the desired position.

Lever Position	Car Movement
F	FORWARD
R	REVERSE



## TIP

The reverse alarm will sound when the drive select lever is turned to "R."

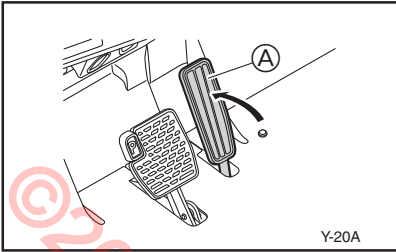


## USB PORTS

A USB port is located inside the dash on the driver side and passenger side. These can be used to power or charge USB devices or accessories. The USB is only powered when the key is in the ON position.

- ① USB port

# CONTROLS

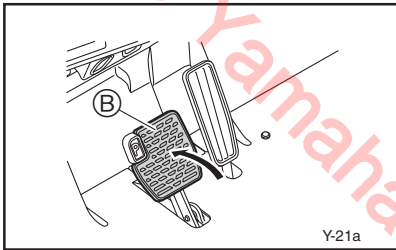


## ACCELERATOR PEDAL

The accelerator pedal controls the golf car's speed.

Action	Car Speed
Depress pedal	Increase
Release pedal	Decrease

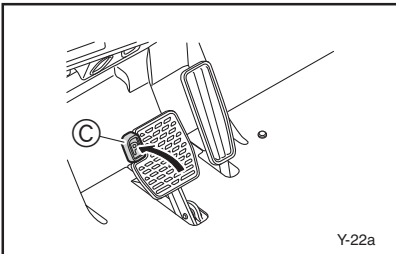
Ⓐ Accelerator pedal



## BRAKE PEDAL

Press down on the brake pedal to stop the golf car.

Ⓑ Brake pedal



## PARKING BRAKE PEDAL

Press down on the parking brake pedal whenever parking the golf car.

Ⓒ Parking brake pedal

## TIP

Release the parking brake by depressing the accelerator pedal.

## ⚠ WARNING

The parking brake will automatically release when the accelerator pedal is depressed. If the main switch is in the "ON" position, depressing the accelerator may suddenly cause the golf car to move. Death or serious personal injury can result from failing to comply with the safety instructions in this manual.

# PRE-OPERATION CHECKS

Pre-operation checks should be made each time you use your golf car. Get in the habit of performing the following checks in the same way so that they become second nature.

## **⚠ WARNING**

To keep vehicle from moving while performing pre-operation checks:

- Remove main switch key.
- Apply parking brake.

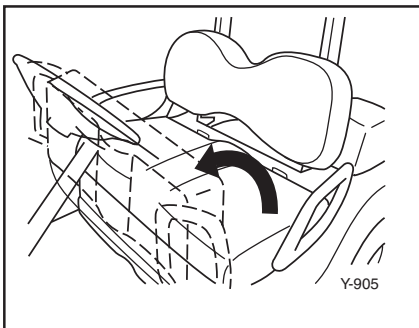
Death or serious personal injury can result from failing to comply with the safety instructions in this manual.

## PRE-OPERATION CHECKS

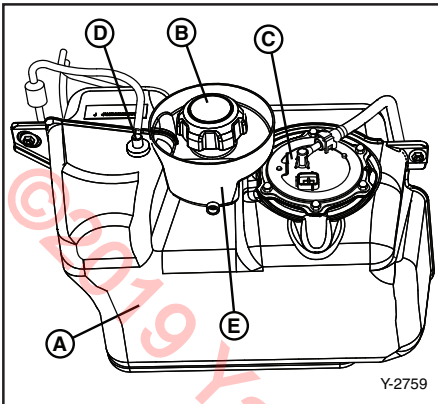
Refer to the Periodic Maintenance charts on pages 8-1 and 8-2.

## SEAT

Open the seat for checking and servicing.



# PRE-OPERATION CHECKS



## FUEL SYSTEM

Make sure there is sufficient fuel in the tank. Also check fuel line and connections for leakage.

- (A) Fuel tank
- (B) Fuel cap
- (C) E.F.I. fuel pump
- (D) Fuel tank vent
- (E) Cover filler funnel

### **⚠ WARNING**

**Gasoline and its vapors are highly flammable and explosive. To avoid fires and explosions and to reduce the risk of injury when refueling, follow these instructions.**

1. Stop engine and allow it to cool for several minutes before refueling.

Do not smoke when refueling and keep away from sparks, flames or other sources of ignition.

Refuel in a well-ventilated area.

2. Take care not to spill gasoline. If gasoline spills, wipe it up immediately with dry rags. Always dispose of gasoline-soaked rags properly.
3. Tighten until a clicking sound is heard.

### **⚠ WARNING**

**Gasoline is poisonous and can cause injury or death. If you swallow gasoline, inhale a lot of gasoline vapor or get gasoline in your eyes, get immediate medical attention.**

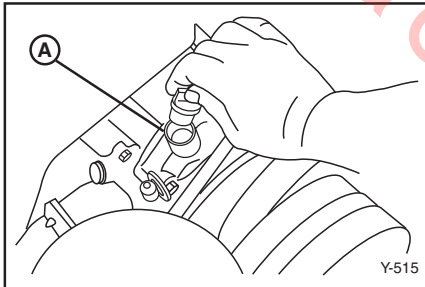
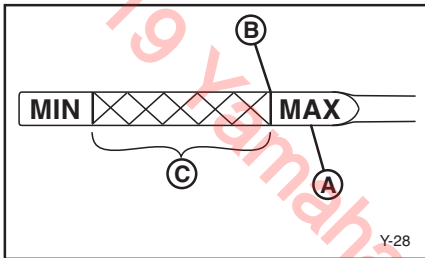
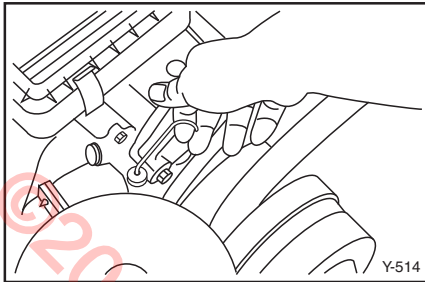
**If any gasoline gets on your skin, immediately wash with soap and water. Change clothing if gasoline spills on it.**

Recommended fuel:  
Unleaded gasoline

Fuel tank capacity:  
20.0 L (5.2 US gal)

Gasoline-based fuels containing more than 10% ethanol are not recommended.

# PRE-OPERATION CHECKS



Recommended oil:  
Yamalube SAE 10W30 4-cycle oil

Engine oil capacity:  
1.0 L, 1000 cc  
(1.0 US qt)

Oil change quantity:  
1.0 L, 1000 cc  
(1.0 US qt)

## NOTICE

Avoid using gasoline blended with methyl alcohol which can damage fuel system parts.

## ENGINE OIL

With the golf car parked on level ground, remove the dipstick and make sure the engine oil is between the MIN and MAX marks (the crosshatched area on the end of the dipstick).

- (A) Oil level dipstick
- (B) Maximum oil level
- (C) Safe operating range

If the oil level is **below** the MIN mark on the dipstick, add oil through the oil filler hole until the oil level is between the MIN and MAX marks.

- (A) Oil filler hole

## NOTICE

- Use care not to fill past the MAX dipstick mark, and be sure no foreign material enters the crankcase.
- Use care not to get oil on the starter belt.

## TIP

The distance between the dipstick marks represents approx. 1/2 L (1/2 US qt) of oil.

## TIP

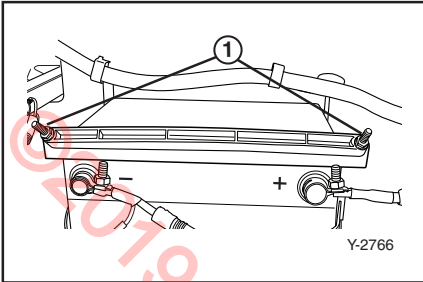
Recommended engine oil classification: API Service SE, SF, or SG. Engine oils labeled "Energy Conserving II" are recommended.



# PRE-OPERATION CHECKS

## BATTERY

Check that the battery is held securely in place to prevent the battery from being damaged from vibration or jarring. Tighten the battery hold-down nuts if loose. Also check that the battery cap is not missing to prevent battery acid from spilling from the battery. Check the battery terminals for corrosion.

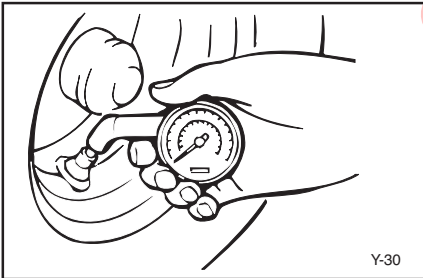


- ① Battery hold-down nuts

### **⚠ WARNING**

**Battery electrolyte is poisonous and dangerous, causing severe burns, etc. It contains sulfuric acid. Avoid contact with skin, eyes or clothing. Ventilate when charging or using in enclosed space. Always shield eyes when working near batteries. KEEP OUT OF REACH OF CHILDREN.**

6



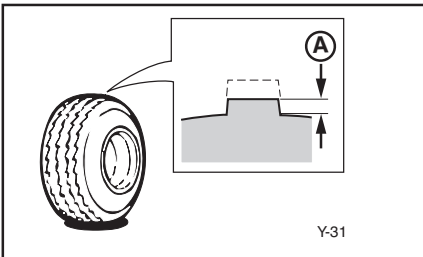
## TIRE CONDITION

### Tire Air Pressure

Check the tire air pressure before operating the golf car.

Tire pressure:

110 kPa, 1.1 kgf/cm<sup>2</sup>  
(16 psi)

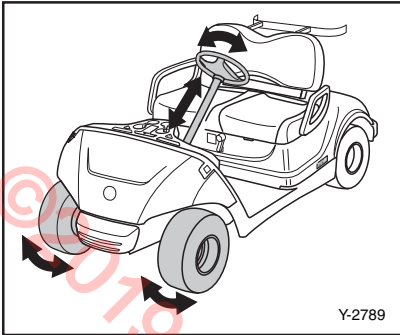


### Tire Wear Limit

Check the tire surface for damage, cracks or embedded objects. When tire tread wears down to 1 mm (0.04 in.), replace the tire.

- Ⓐ Wear limit

# PRE-OPERATION CHECKS



## STEERING SYSTEM

Check the steering system for excessive freeplay by:

- moving the steering wheel up and down, and back and forth.
- turning the steering wheel slightly to the right and left.

If you feel excessive freeplay, or hear rattling sounds which may indicate loose steering components, consult a Yamaha dealer.

## REVERSE ALARM

Check the reverse alarm by moving the drive select lever to “R” for reverse. The alarm should sound.

## PEDAL OPERATION

Check the following pedal controls for proper operation. If a pedal does not work properly, consult a Yamaha dealer.

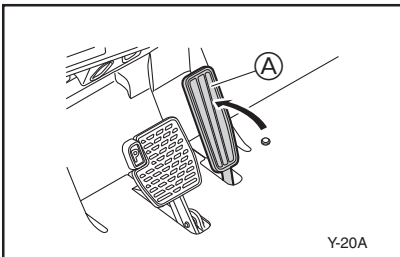
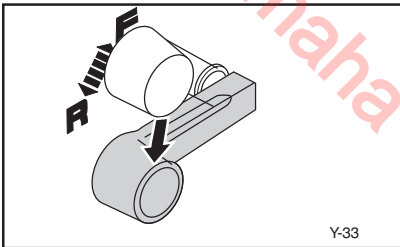
### Accelerator Pedal

#### **⚠ WARNING**

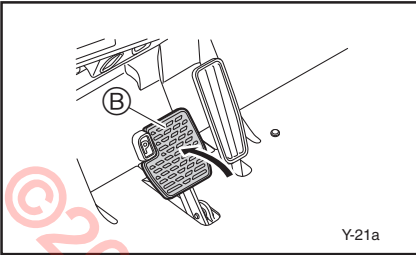
With the main switch in the “OFF” position, make sure the accelerator pedal operates smoothly.

- Ⓐ Accelerator pedal

6



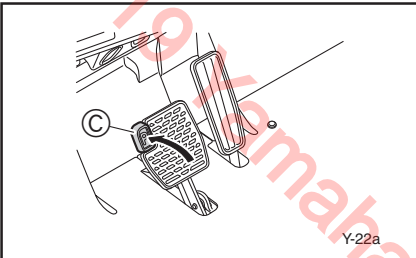
# PRE-OPERATION CHECKS



## Brake Pedal

Make sure the brake pedal feels firm when pressed and returns to its original position when released.

Ⓑ Brake pedal



## Parking Brake Pedal

Make sure the parking brake pedal locks in place with a positive click, and releases when the accelerator pedal is pressed.

Ⓒ Parking brake pedal

## TIP

Release the parking brake by depressing the accelerator pedal.

# OPERATION

## BODY AND CHASSIS

Before each use, visually inspect the golf car body and chassis for damaged and/or missing parts.

## STARTING

1. With the parking brake applied, turn the drive select lever to “F” for forward, or “R” for reverse.

### NOTICE

**Do not shift from “F” (forward) to “R” (reverse) while the golf car is moving. Transmission damage can result.**

2. Turn the main switch to “ON.”

### WARNING

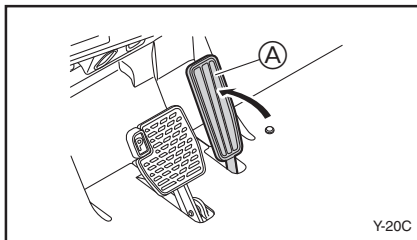
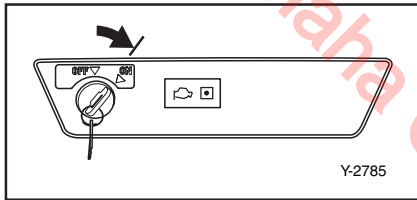
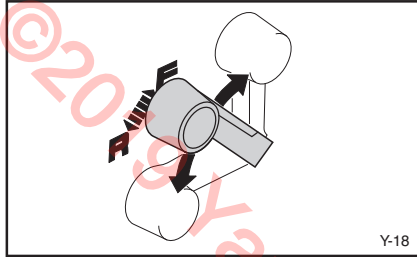
**Do not depress the accelerator pedal when turning on the main switch or the golf car may suddenly start moving. Death or serious personal injury can result from failing to comply with the safety instructions in this manual.**

3. Check that your path is clear in the direction you plan to go, and slowly depress the accelerator pedal. The golf car will start to move.

Ⓐ Accelerator pedal

### TIP

The parking brake automatically releases when the accelerator pedal is depressed.



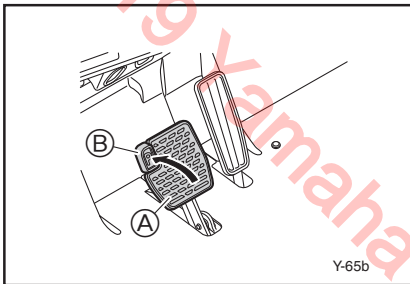
## STOPPING

To stop the golf car, gradually press down on the brake pedal.

- Ⓐ Brake pedal

When the golf car has come to a stop, apply the parking brake pedal and turn the main switch to "OFF."

- Ⓑ Parking brake pedal



### **NOTICE**

**Do not hold the golf car on an incline with the accelerator – use the brake. Transmission damage can result.**

# MAINTENANCE

## PERIODIC MAINTENANCE CHARTS

Regular maintenance is required for the best performance and safe operation of your golf car.

### ⚠ WARNING

Be sure to turn off the main switch and apply the parking brake when you perform maintenance unless otherwise specified. If the owner is not familiar with servicing the machine, death or serious personal injury can result. When in doubt the work should be done by a Yamaha dealer or other qualified mechanic.

### NOTICE

Yamaha Golf-Car Company does not approve the use of high-pressure washers to clean the products they manufacture. Doing so may damage the finish on the body or result in doing other damage not covered by warranty.

CS - CHECK CA - CHECK AND ADJUST R - REPLACE S - SERVICE CL - CLEAN AND LUBRICATE L - LUBRICATE

	Remarks	Daily Pre-Operation	40 Rounds 20 hours 100 miles 160 kms (Every month)	250 rds 125 hrs 600 mls 1000 kms (Every 6 months)	500 rds 250 hrs 1200 mls 2000 kms (Every year)	1000 rds 500 hrs 2500 mls 4000 kms (Every 2 years)	2000 rds 1000 hrs 5000mls 8000 kms (Every 4 years)	Page
PRE-OP	Check engine oil	CS	CS	CS				6-3
	Check fuel lines for leakage	CS	CS	CS	CS	CS	CS	6-2
	Check fuel level	CS	CS	CS	CS	CS	CS	6-2
	Check for looseness and corrosion of battery terminals and hold downs	CS	CS	CS	CS	CS	CS	6-4
	Check brake pedal free play and adjust if necessary	CS	CA	CA	CA	CA	CA	8-14
	Check steering operation	CS	CS	CS	CS	CS		6-5
	Check tire pressure, tread depth, tire surface for damage	CS	CA	CA	CA	CA	CA	6-4
	Check body and chassis for damage	CS	CS	CS	CS	CS	CS	7-1
	Check tightness of all bolts, nuts, screws and rivets	CS	CS	CS	CS	CS	CS	*
Check reverse alarm operation	CS	CS	CS	CS	CS	CS	6-5	
EVERY MONTH	Check for debris in intake air duct, tubing and connection		CS					8-9
	Check wear of drive belt		CS	CS	CS	CS	CS	8-8/ 8-9
	Check operation of Forward / Reverse shifting		CS	CS	CS	CS	CS	7-1
	Clean / Lube pedal control area		CL					*
EVERY 6 MONTHS	Wash pre-filter, check air cleaner element			S	S	S	S	8-7/ 8-8
	Check spark plug and plug cap condition** / Check compression			CS	CS	CS	CS	8-4
	Check brake cables for abrasion and damage, and check operation			CS				8-14
	Check shock absorbers for oil leaks and damaged springs			CS	CS	CS		*

\* Items without a page number reference should be serviced by a Yamaha dealer or other qualified mechanic. This manual does not contain these procedures. They are contained in the Service Manual.

\*\* Related to emission control system.

# MAINTENANCE

CS - CHECK CA - CHECK AND ADJUST R - REPLACE S - SERVICE CL - CLEAN AND LUBRICATE L - LUBRICATE

	Remarks	Daily Pre-Operation	40 Rounds 20 hours 100 miles 160 kms (Every month)	250 rds 125 hrs 600 mls 1000 kms (Every 6 months)	500 rds 250 hrs 1200 mls 2000 kms (Every year)	1000 rds 500 hrs 2500 mls 4000 kms (Every 2 years)	2000 rds 1000 hrs 5000mls 8000 kms (Every 4 years)	Page	
EVERY YEAR	Replace engine oil				R	R	R	8-5	
	Grease primary and secondary clutch				L			*	
	Adjust throttle cables,** check electronic fuel injection throttle shaft for wear**				CA	CA	CA	*	
	Check starter V-belt for damage and tension				CS	CS	CS	*	
	Check drive belt for slippage, wear or scratches				CS	CS	CS	8-9	
	Check operation of speed limiter				CS	CS	CS	*	
	Apply battery terminal protectant				S	S	S	*	
	Check wiring connections and insulation				CS	CS	CS	*	
	Perform primary and secondary clutch maintenance: (primary) - Inspect sheaves for wear and damage - Inspect weights/washer and sliders for wear (secondary) - Inspect ramp shoes for wear - Replace if necessary					CL	CL	CL	*
	Check rear axle bearing play for roughness or freeplay					CS	CS	CS	*
	Check steering knuckle bushing free play / Adjust wheel alignment					CA	CA	CA	*
	Check wheel nut tightness, front wheel bearing play					CS	CS	CS	*
	Adjust parking brake release					CA	CA	CA	8-15
Check tail screen for clogging					CS			*	
EVERY 2 YEARS	Replace brake cables					R		*	
	Check starter brushes for wear and commutator for dirt					CS	S	*	
EVERY 4 YEARS	Replace transmission oil						R	8-12	
	Replace fuel hoses						R	*	
	Check tightness of cylinder head / Adjust valves						CA	*	
	Inspect brake shoes and adjust or replace if necessary						CS R	*	

\* Items without a page number reference should be serviced by a Yamaha dealer or other qualified mechanic. This manual does not contain these procedures. They are contained in the Service Manual.

\*\* Related to emission control system.

# MAINTENANCE

## EXHAUST EMISSION CONTROL SYSTEM AND COMPONENTS

Item	Abbreviation
• ELECTRONIC FUEL INJECTION	EFI
• ELECTRONIC CONTROL UNIT & PLUG, SPARK	ECU
• CRANKCASE 1 & HEAD, CYLINDER 1	PCV (Positive Crankcase Ventilation)
• AIR FILTER ASSY.	ACL (Air Cleaner)
• MUFFLER	MUFF., 2
• CARBON CANISTER	CC
• INVERSION VALVE	IV

The above items and the corresponding abbreviations are provided in accordance with U.S. EPA REGULATIONS FOR SMALL NONROAD ENGINES and the CALIFORNIA REGULATIONS FOR NEW 1995 AND LATER OFF-HIGHWAY RECREATIONAL VEHICLES AND ENGINES.

The abbreviations conform to the latest version of the SAE's recommended practice document J1930, "Diagnostic Acronyms, Terms, and Definitions For Electrical/Electronic System."

It is recommended that these items be serviced by a Yamaha dealer or other qualified mechanic.

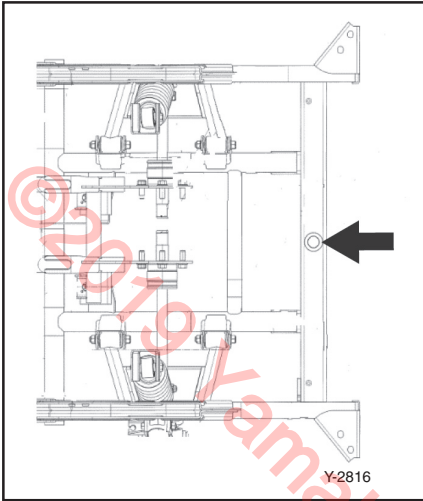
## TROUBLESHOOTING

If the vehicle's engine will not start, use the following chart:

Cause	Remedy
Fuel System	
No fuel in tank	Fill fuel tank
Fuel pump inoperable	Consult Yamaha dealer
Clogged fuel line	Consult Yamaha dealer
Foreign matter in fuel filter	Consult Yamaha dealer
Dirty injector	Consult Yamaha dealer
Electrical System	
Spark plug dirty with carbon, or wet	Clean carbon or wipe spark plug dry
Faulty ignition system	Consult Yamaha dealer



# MAINTENANCE



## Rear Lifting Point

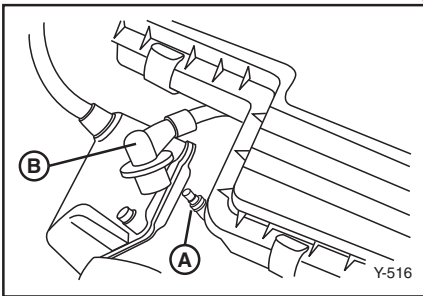
If the rear of the car needs to be lifted for a maintenance procedure, make sure it is lifted at the correct rear lifting point (see arrow).

## Spark Plug Inspection

You should periodically remove and inspect the spark plug. Dirty or worn spark plugs can cause poor performance.

### **⚠ WARNING**

**When removing or installing the spark plug, be careful not to damage the insulator. A damaged insulator could allow external sparks, which could lead to explosion or fire. Death or serious personal injury can result from failing to comply with the safety instructions in this manual.**



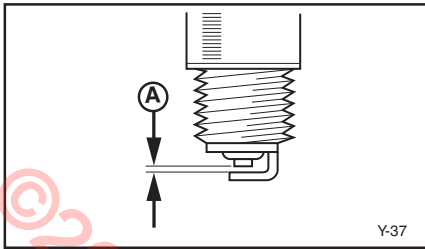
- Ⓐ Spark plug
- Ⓑ Spark plug cap

1. Check for discoloration and remove carbon deposits with a spark plug cleaner or wire brush. The normal electrode color will be tan.
2. Check the spark plug type, and check the spark plug gap with a feeler gauge.

Standard spark plug:  
BPR2ES

Spark plug gap:  
0.7 ~ 0.8 mm (0.028 ~ 0.031 in.)

# MAINTENANCE



- ① Gap
3. Clean the gasket and plug surfaces and install the spark plug finger-tight before tightening to the following torque:

Spark plug torque:  
20 Nm, 2.0 m·kg  
(14.5 ft·lb)

## Engine Oil Replacement

1. Warm up the engine for several minutes, place the golf car on a level surface, then stop the engine.

### **⚠ WARNING**

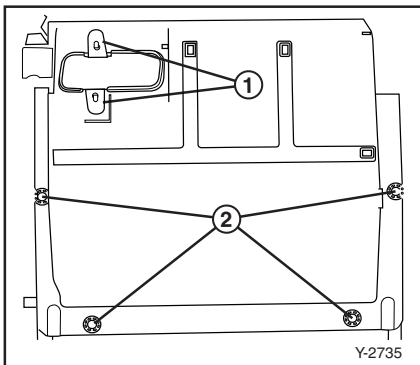
Use caution not to touch hot engine oil or hot engine parts, during the following procedure. Death or serious personal injury can result from failing to comply with the safety instructions in this manual.

### **NOTICE**

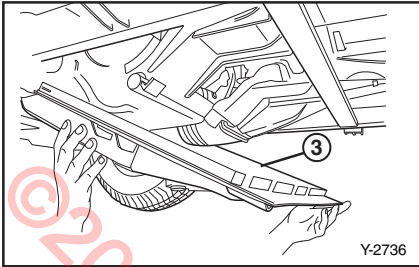
To remove the oil from the engine, an oil extraction tool can be used to extract the oil via the dipstick feed hole instead of draining out the drain plug.

2. Block rear tires and lift front end of car. Secure car with car stands.
3. Release two rubber tabs to exhaust duct and four bolts to lower panel.

- ① Rubber tabs  
② Panel bolts



# MAINTENANCE



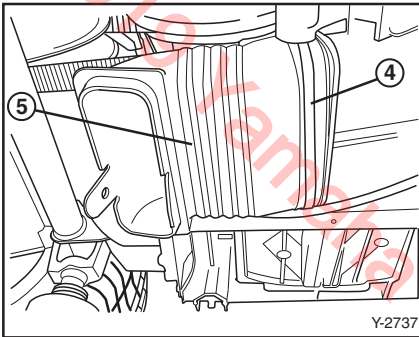
4. Tip the front of the lower panel down and remove the panel.

③ Lower panel

5. Remove tie strap, then remove rubber exhaust duct from plastic duct.

④ Tie strap

⑤ Exhaust duct



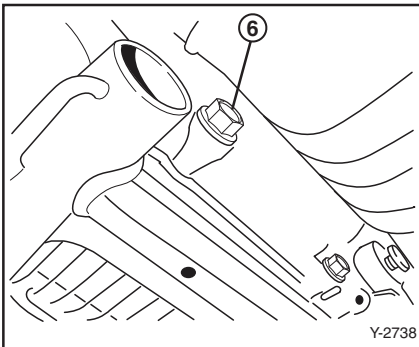
6. Place an oil pan under the engine drain plug.

7. Remove the oil drain plug and let the oil drain completely.

⑥ Drain plug

## TIP

Dispose of used oil in an environmentally safe way, such as taking oil to an oil collection station.



8. Install the drain plug, along with a new drain plug gasket, finger-tight before tightening to the following torque:

Drain plug torque:  
31 Nm, 3.1 m·kg  
(23 ft·lb)

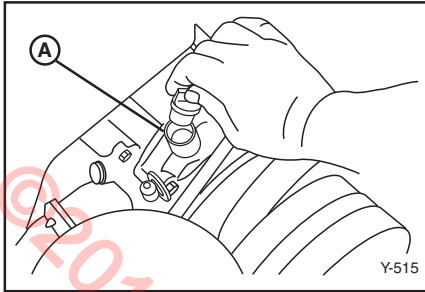
9. Add the correct quantity of oil through the oil filler hole.

Recommended oil:  
Yamalube SAE 10W30 4-cycle oil

Engine oil capacity:  
1.0 L, 1000 cc  
(1.0 US qt)

Oil change quantity:  
1.0 L, 1000 cc  
(1.0 US qt)

# MAINTENANCE



## TIP

Recommended engine oil classification: API Service SE, SF, or SG. Engine oils labeled "Energy Conserving II" are recommended.

(A) Oil filler hole

## NOTICE

**Use care not to fill past the MAX dipstick mark, and be sure no foreign material enters the crankcase.**

After replacing engine oil, check for oil leaks around the drain plug. If oil leaks are found, consult a Yamaha dealer.

10. Reinstall exhaust duct and secure by using a new tie strap.

11. Install panel and mount with four bolts.

12. Secure rubber tabs of exhaust duct to panel.

## Air Filter

To remove the air filter elements:

1. Unlatch the air filter cover clips and remove cover.

(A) Air filter cover clips

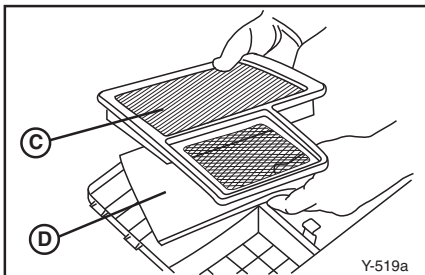
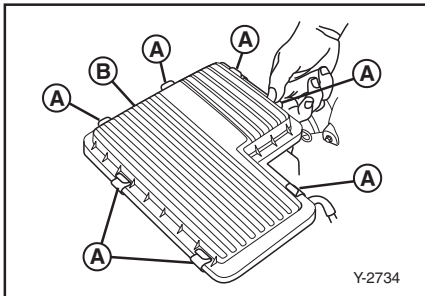
(B) Air filter cover

2. Lift the air filter and pre-filter out of the air filter case.

(C) Air filter

(D) Pre-filter

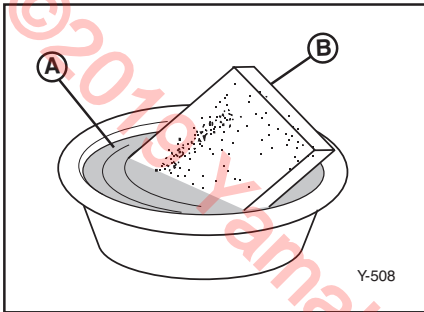
8



# MAINTENANCE

## NOTICE

**Be careful not to drop anything into the air inlet. Serious engine damage can result.**



Inspection and cleaning:

3. Wash the foam pre-filter in soap and water. Allow it to dry.

- (A) Soap and water
- (B) Foam element

4. Check the filter element. If damaged or dirty, replace it.

## NOTICE

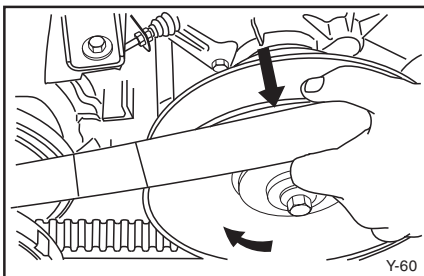
**Do not wring out the foam pre-filter, this could cause it to tear.**

5. To replace the elements, reverse the above steps.

## NOTICE

**The pre-filter has a notch on one side. It will only fit in the case one way. Serious engine damage can result from improperly positioned filter.**

8

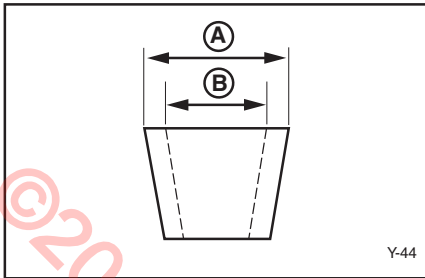


## Drive Belt

To remove the drive belt:

1. Set the drive select lever halfway between forward and reverse.
2. Pull up on the drive belt and push it outward over the edge of the secondary sheave.
3. Turn the secondary sheave clockwise and the drive belt will roll off the sheave.
4. Remove the drive belt from the primary sheave.

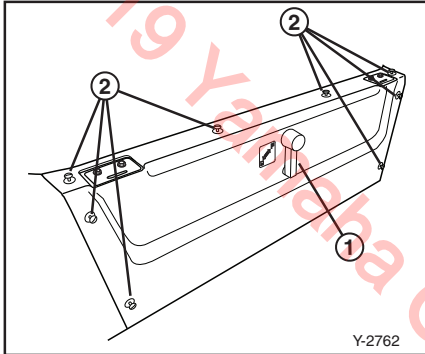
# MAINTENANCE



## Inspection:

To inspect the drive belt, check for frayed edges or tears, and measure drive belt against the following specification. If the belt shows excessive wear or damage, replace the belt with a new one.

- (A) New: 31.0 mm (1.20 in.)
- (B) Replace when belt reaches: 27.0 mm (1.06 in.)



5. To install the drive belt, reverse the above steps, rolling the belt back over the secondary sheave.

## Clutch

Maintenance is required each year for proper drive operation. Refer to the Periodic Maintenance chart in this owner's manual.

## Air Duct

Check for debris in intake air duct, tubing and connections:

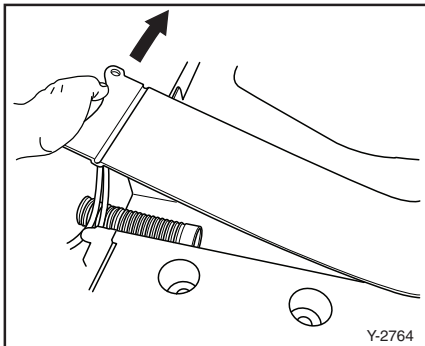
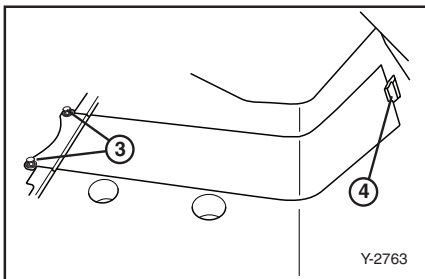
1. Park the golf car on a flat, level surface and apply the parking brake.
2. Remove the floor mat.
3. Remove the seat.
4. Remove the drive select lever.

- (1) Drive select lever
5. Unscrew and remove the 8 retaining pins and remove the front panel.

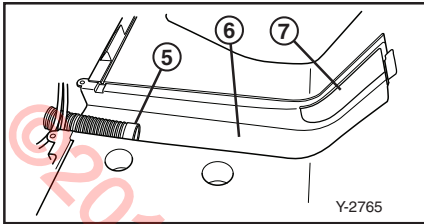
- (2) Retaining pins
6. Remove the 2 plastic rivets.

- (3) Plastic rivets
- (4) Tab

7. Lift up on the floor panel and slide the panel tab out of the slot. Remove the panel.



# MAINTENANCE



8. Clean out any dirt or debris from the intake tube, the floor trough and the intake air opening.

- ⑤ Intake tube
- ⑥ Floor trough
- ⑦ Intake air opening

9. After removing debris, install the floor panel, front panel, drive select lever, seat and the floor mat.

## Battery

The 12-volt battery that provides starting power to your gas car normally does not require the addition of water. If the battery loses its charge, have an experienced mechanic charge it.

### ⚠ WARNING

**Battery electrolyte is poisonous and dangerous, causing severe burns, etc. It contains sulfuric acid. Avoid contact with skin, eyes, or clothing.**

**Antidote:**

**EXTERNAL:** Flush with water.

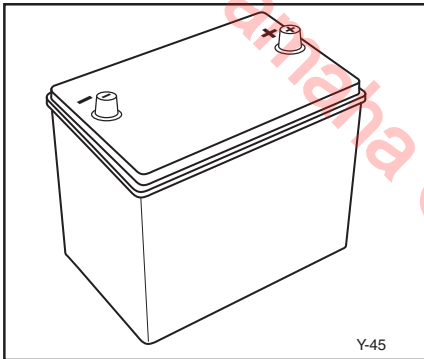
**INTERNAL:** Drink large quantities of water or milk. Follow with milk of magnesia, beaten egg, or vegetable oil. Call physician immediately.

**EYES:** Flush with water for 15 minutes and get prompt medical attention.

**Batteries produce explosive gases. Keep sparks, flame, cigarettes, etc., away.**

**Ventilate when charging or using in enclosed space. Always shield eyes when working near batteries.**

**KEEP OUT OF REACH OF CHILDREN.**



# MAINTENANCE

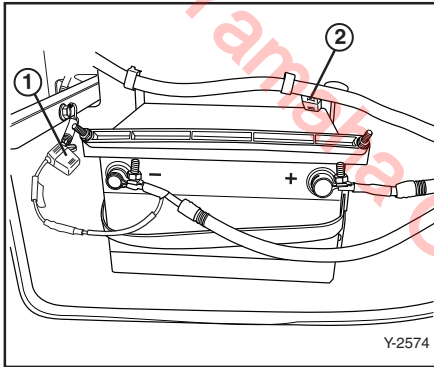
## Fuse Replacement

### ⚠ WARNING

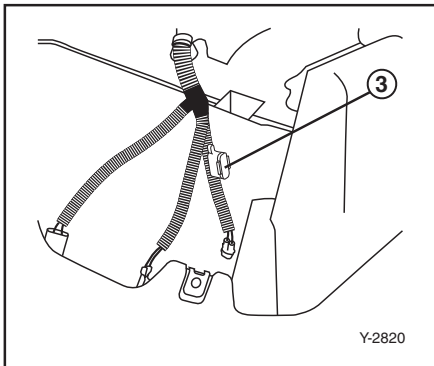
Be sure to use the specified fuse. Using a wrong fuse can cause electrical system damage and create a fire hazard. Death or serious personal injury can result from failing to comply with the safety instructions in this manual.

### NOTICE

When replacing a fuse, be sure the main switch is turned off to prevent accidental short-circuiting and electrical system damage.



1. Locate the in-line fuse holders on the main wire harness next to the battery and on the pigtail off the negative battery cable.
2. Pull fuse holder cover off.
3. Pull fuse out, inspect and replace if necessary.



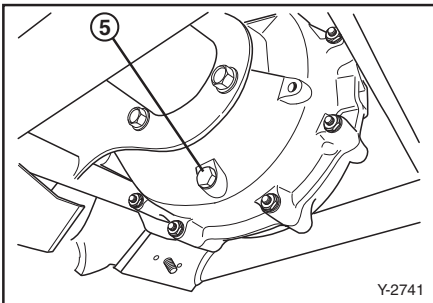
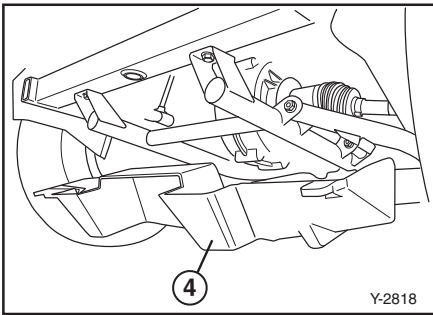
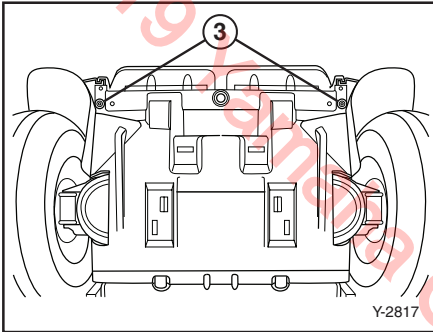
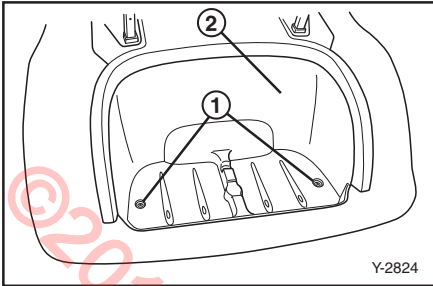
#### Fuse Type:

- ① 20 Amp, Blade Style (MAIN)  
Fuse location off of negative battery terminal @ 15 cm (6 in.)
- ② Fuse (10A), Blade Style
- ③ Fuse (5A), optional

4. There is an optional 5-amp fuse located under the cup holder. Remove the cup holder to gain access to the fuse.



# MAINTENANCE



## Transmission Oil

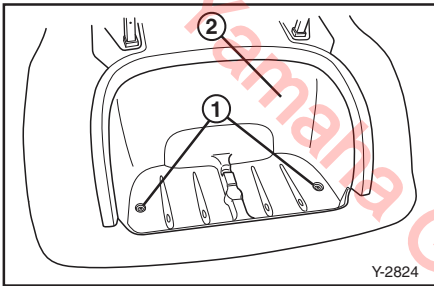
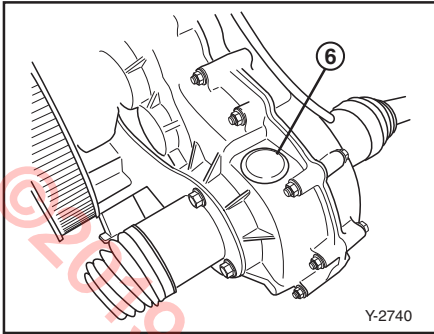
### To replace transmission oil:

1. Place the PTV on a flat, level surface.
2. Remove two bolts ① and the bag holder insert ②.
3. Block rear tires and lift front end of PTV. Secure PTV with car stands.
4. Remove the two panel retaining bolts for the lower panel.
- ③ Panel bolts
5. Tip the front of the lower panel down and unhook the front of the panel to remove the panel.
- ④ Lower panel
6. Place an oil pan under the transmission.
7. Remove the drain plug from the transmission and allow the oil to drain completely.
- ⑤ Oil drain plug

### TIP

Dispose of the oil in an environmentally safe way, such as taking oil to an oil collection station.

# MAINTENANCE



8. Install the drain plug.
9. Remove the oil fill plug on top of the transmission.
- ⑥ Oil fill plug
10. Fill the transmission with 16.06 oz (475 cc) and replace the oil fill plug.
11. Install the lower panel and exhaust duct tabs.
12. Install the bag holder insert ② and secure with two bolts ①.

## **⚠ WARNING**

**Before performing wheel or brake maintenance, verify that the main switch is in the “OFF” position. Accidental starting of the vehicle could cause the vehicle to move, causing death or serious personal injury.**

## Wheel Replacement

To remove and install a wheel on your golf car:

1. With the wheels blocked to prevent the golf car from moving, loosen the wheel nuts.
2. Elevate the golf car with a jack and remove the wheel nuts and the wheel.
3. Reverse the removal steps when installing the wheel.

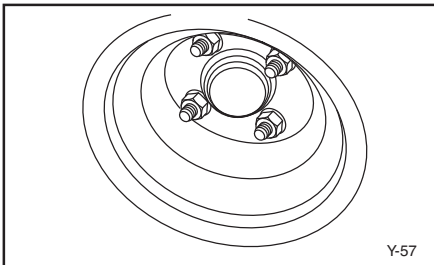
Wheel nut tightening torque:  
88-105 Nm, 8.8-10.7 m·kg  
(65-77 ft·lb)

8

Recommended oil:  
YAMALUBE SAE 80W-90 Gear Oil

Transmission oil capacity:  
475 cc (16.06 oz)

Transmission oil change quantity:  
475 cc (16.06 oz)



# MAINTENANCE

## Brake Adjustment

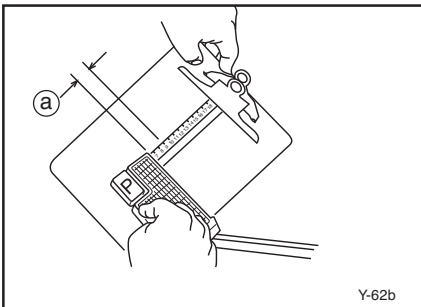
The brakes on your golf car are self-adjusting.

Before you operate the golf car, press down on the brake pedal several times to make sure the brakes are functioning properly.

### **⚠ WARNING**

**Consult your Yamaha dealer before using your golf car if you suspect brake problems. Brake failure could result in a serious accident. Death or serious personal injury can result from failing to comply with the safety instructions in this manual.**

©2019 Yamaha Golf Cart Company

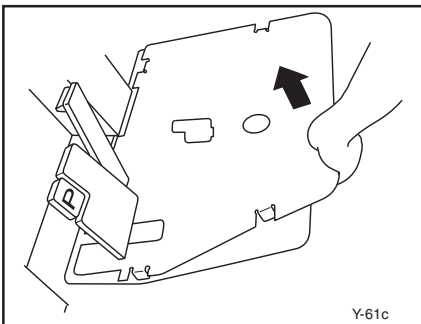


## Brake Pedal Free Play Adjustment

Check the brake pedal free play by pressing against the pedal with two fingers (using light force) and measuring the distance the pedal travels before resistance is felt.

8

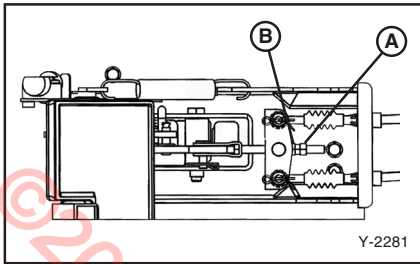
Brake pedal free play (a):  
50-55 mm (1.97-2.17 in.)



To adjust the brake pedal free play:

1. Remove the floor mat and service lid from the floor of the golf car.

# MAINTENANCE



2. If the free play distance needs adjusting, loosen the lock nut (A) and turn the adjusting nut (B) in or out until the free play specification is met. Then tighten the lock nut in place.

## **⚠ WARNING**

**Do not over-tighten the brake cables. Over-tightening will increase brake wear and affect overall performance of golf car. Premature brake wear can result. Death or serious personal injury can result from failing to comply with the warning labels in this manual.**

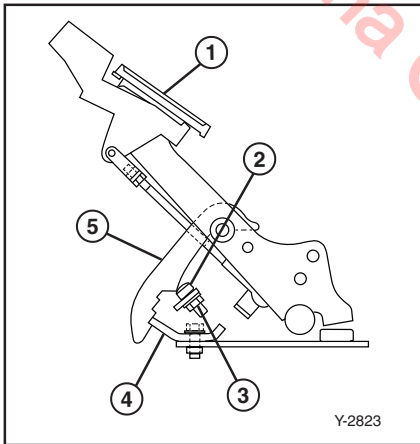
## Parking Brake Release Adjustment

### **NOTICE**

**Before performing parking brake release adjustment, adjust brake pedal free play.**

1. Apply pressure to the parking brake pedal until the brake nail catches the first latch position on the sector.
2. Loosen the locknut and turn the bolt counterclockwise until it contacts the sector.
3. Turn the bolt clockwise 3/8 (120 degrees), then tighten locknut.

- ① Parking brake pedal
- ② Bolt
- ③ Locknut
- ④ Brake nail
- ⑤ Sector



Fill up the fuel tank with new fuel and add recommended Yamalube Fuel Stabilizer and Conditioner per the instructions listed on the container. Operate the vehicle for at least 5 minutes to distribute the treated fuel through the fuel system.

Specified amount:

7.5 cc of stabilizer for each liter of fuel (1 oz. of stabilizer for each gallon of fuel)

## TIP

Use of fuel stabilizer and conditioner eliminates the need to drain the fuel system. Consult a Yamaha dealer if the fuel system needs to be drained instead.

Perform the following preparations when storing your golf car for extended periods of time:

## NOTICE

**Yamaha Golf-Car Company does not approve the use of high-pressure washers to clean the products they manufacture. Doing so may damage the finish on the body or result in doing other damage not covered by warranty.**

## TIP

Turn main switch key to "OFF" position, remove key and store key in a safe place.

## DRAINING FUEL

### ⚠ WARNING

**Gasoline and its vapors are highly flammable and explosive. Death or serious personal injury can result from failing to comply with the safety instructions in this manual.**

- **Do not smoke when draining fuel and keep away from sparks, flames, or other sources of ignition.**
- **Stop engine and allow it to cool for several minutes before draining fuel.**
- **Drain fuel in a well-ventilated area.**
- **Take care not to spill gasoline. If gasoline spills, wipe it up immediately with dry rags. Always dispose of gasoline-soaked rags properly.**
- **Tighten the filler cap securely after checking fuel level to avoid leaking.**
- **If you inhale a lot of gasoline vapor, or get gasoline in your eyes, get immediate medical attention.**
- **If any gasoline gets on your skin, immediately wash with soap and water. Change clothing if gasoline spills on it to avoid potential fire hazard.**

# STORAGE

## ENGINE PREPARATION

With the key removed and the spark plug lead disconnected, turn the clutch by hand until compression is felt. This puts the valves in the closed position.

## CHASSIS PREPARATION

1. Verify the tire pressure is set to 110 kPa, 1.1 kgf/cm<sup>2</sup> (16 psi).
2. Clean exterior of the golf car and apply a rust inhibitor.
3. Cover the golf car with a breathable cover and store it in a dry, well-ventilated area.

## BATTERY PREPARATION

1. Remove the battery from your golf car and store it in a cool, dry place that stays between 0°C (32°F) and 30°C (90°F).
2. Have the battery recharged every 60-90 days to keep it fully charged. The battery must be kept fully charged to avoid damage.
3. Batteries like the one supplied with your car normally do not require you to check the water level inside the battery for the one year warranty period provided by the manufacturer.

### NOTICE

**Do not allow cleaning solution to enter battery cells. Serious battery damage can result.**

4. Clean the top of the battery with a solution of baking soda and water, as necessary, to remove corrosion.

# SPECIFICATIONS

## GENERAL SPECIFICATIONS

Items	DR2A19 EFI
Dimensions: Overall length	2395 mm (94.3 in.)
Overall width	1200 mm (47.2 in.)
Overall height (steering height)	1190 mm (46.9 in.)
Height of floor	310 mm (12.2 in.)
Wheelbase	1640 mm (64.6 in.)
Tread:	
Front	870 mm (34.3 in.)
Rear	980 mm (38.6 in.)
Minimum ground clearance	110 mm (4.3 in.)
Weight: Dry weight (with suntop, without battery)	324 kg (714 lb)
Performance:	
Factory speed setting	19 km/h (12 mph)
Maximum speed	24 km/h (15 mph)
Minimum turning radius	2.8 m (110.2 in.)
Seating capacity	Two occupants per seat, four occupants maximum
Fuel Tank Capacity	20.0 L (5.2 U.S. Gallons)

# SPECIFICATIONS

## ENGINE

Items	DR2A19 EFI
Description:	
Engine type	4-stroke, Gasoline, OHV
Number of cylinders	Single
Displacement	357 cm <sup>3</sup>
Bore x stroke	85 x 63 mm (3.30 x 2.48 in.)
Compression ratio	8.1:1
Output / Gross	9.17 kw (12.29 hp) / 3600 rpm
Output / Net	6.71 kw (9.00 hp) / 3600 rpm
Cooling system	Forced air-cooled
Starting system	Starter
Ignition system	TCI Magneto
Spark plug type	BPR2ES
Spark plug gap	0.7-0.8 mm (0.028-0.031 in.)
Lubrication system	Splash
Engine oil type	Yamalube SAE 10W30 4-cycle oil
Engine oil capacity	1.0 L, 1000 cc (1.0 US qt)
Oil change quantity	1.0 L, 1000 cc (1.0 US qt)

## TRANSMISSION

Items	DR2A19 EFI
Transmission:	
Type	V-belt automatic centrifugal engagement
V-belt width and outer line length	31.0 x 1010 mm (1.20 x 39.76 in.)
V-belt wear limit	27.0 mm (1.06 in.)
Governor:	
Type	Oil bath flyweight
Factory speed setting	19 km/h (12 mph)
Differential/reduction gear:	Secondary reduction system helical gear Secondary reduction ratio: Forward 11.593:1; Reverse 14.356:1 Differential type bevel gear Lubricant/capacity Yamalube SAE 90 gear oil/475 cc (475 mL, 0.50 US qt)



# SPECIFICATIONS

## BATTERIES

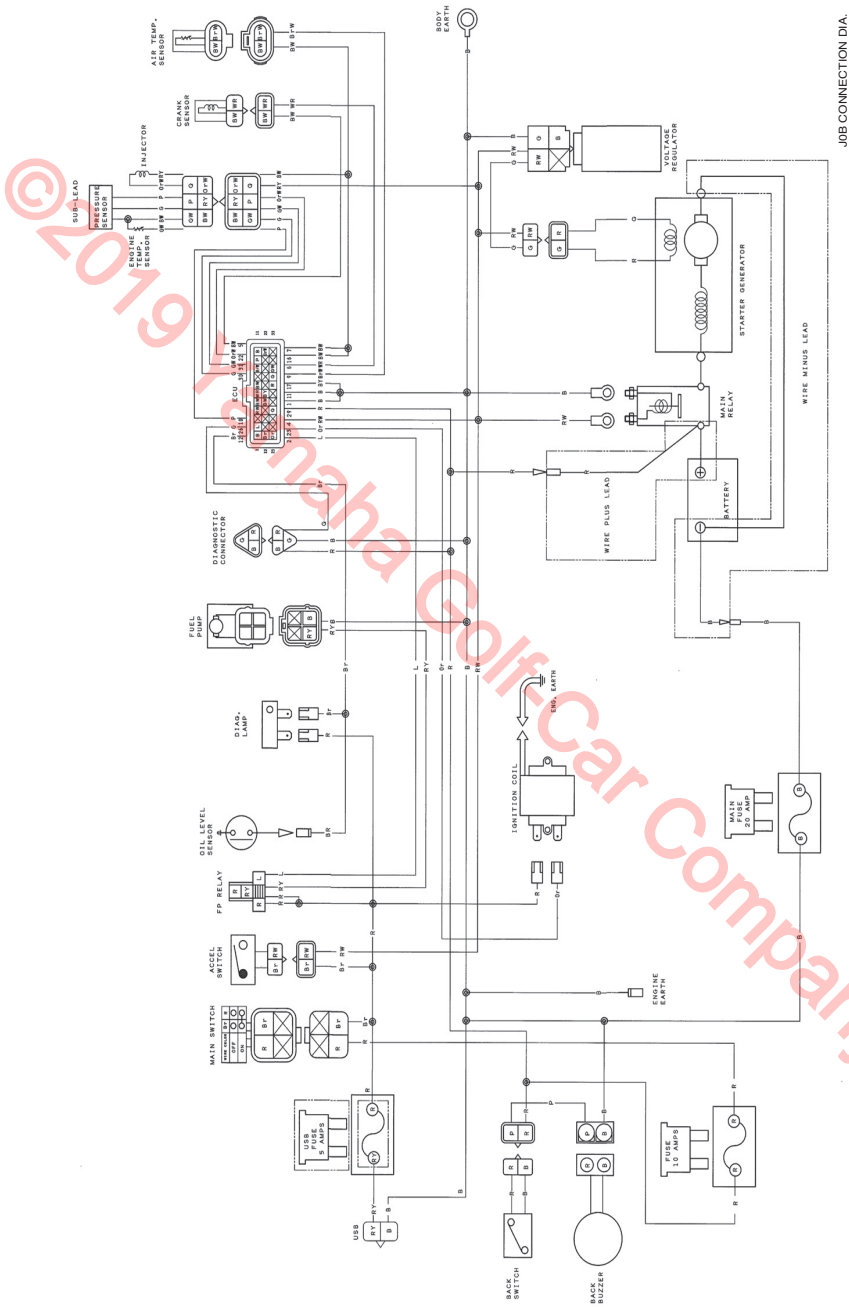
Items	DR2A19 EFI
Battery:	BCI group 24, RC: minimum 75 min CCA: minimum 400A

## CHASSIS

Items	DR2A19 EFI
Steering system: Type Steering angle (L.H.) Steering angle (R.H.)	Rack and Pinion 1.85 turn 1.85 turn
Brakes: Brake system Type of brake Brake pedal freeplay linkage adjustment (Brake cable end play)	Mechanical drum brake on each rear wheel with self-adjusters Dual internal expanding shoe Leading/trailing shoes (self-adjusting) 50-55 mm (1.97-2.17 in.) 0.004-0.02 in. (0.1-0.5 mm)
Parking brake: Type	Foot type; parking brake with automatic release.
Wheel: Tire size: Front Rear Rim size: Tire pressure:	18 x 8.50-8.00/4 PR 18 x 8.50-8.00/4 PR 7.00-1-8.00 110 kPa, 1.1 kgf/cm <sup>2</sup> (16 psi)

# WIRING

# DR2A19 EFI WIRING DIAGRAM



JOB CONNECTION DIA.

©2019 Yamaha Golf-Car Company

©2019 Yamaha Golf-Car Company



PRINTED IN USA  
2018.11-0.3x2 CR  
(E)